

# weezago

The software solution  
for digital media



[www.weezago.com](http://www.weezago.com)

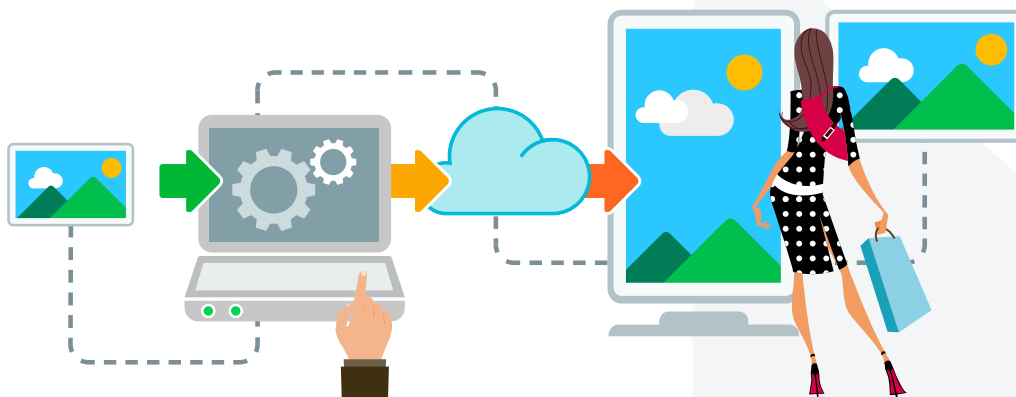


# SUMMARY

<b>PRESENTATION OF THE SYSTEM</b> .....	<b>3</b>
1. CONCEPT .....	3
2. SSSP TECHNOLOGIE .....	3
3. REQUIREMENTS .....	3
<b>ACCESS</b> .....	<b>4</b>
1. GO TO .....	4
2. LOGIN .....	4
3. CREATE AND MANAGE ! .....	5
4. USER INTERFACE .....	5
<b>VISUAL AND SCENARIO</b> .....	<b>6</b>
1. INTERFACE USE .....	6
2. TOOLBAR .....	6
<b>CREATE AND MANAGE</b> .....	<b>7</b>
1. VISUAL .....	7
2. SCENARIO .....	7
<b>BROADCAST</b> .....	<b>8</b>
1. SCHEDULING / WEEK .....	8
2. SCHEDULING / YEAR .....	9
3. DEVICES .....	10
4. DEVICE INFORMATIONS .....	11
<b>HOW TO ?</b> .....	<b>12</b>
LOGIN .....	12
CREATE A SCENARIO .....	12
CREATE A CALENDAR .....	12
BROADCAST A SCENARIO .....	12
BROADCAST A CALENDAR .....	12
<b>BROADCASTED FILES SPECS</b> .....	<b>13</b>

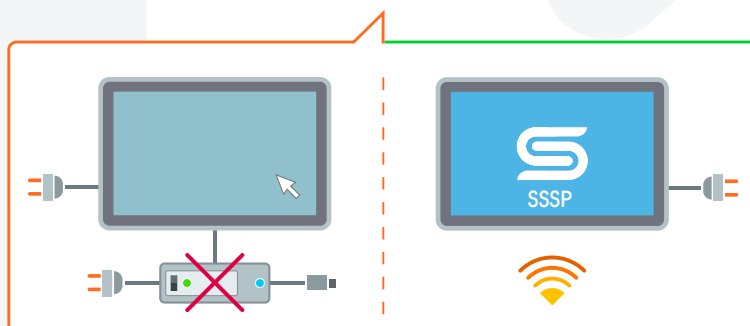
# PRESENTATION OF THE SYSTEM

## 1. CONCEPT



1. Digital Signage
2. Content Management System 100% SaaS
3. Simple and intuitive interface, accessed via an internet browser
4. Broadcast and remote monitoring multi-display
5. Weekly and daily scheduling of multi programmes

## 2. SSSP TECHNOLOGIE



### SSSP technology (Samsung Smart Signage Platform) :

the embedded media player is powerful enough to display full HD content with no external hardware, drastically reducing maintenance cost and allowing remote monitoring and content management with a simple internet connection.

## 3. REQUIREMENTS



- SAMSUNG screens with technologie SSSP
- WIFI connexion (fast one, to reach the screens in the Windows)

# ACCESS

## 1. GO TO

www.weezago.com

ACCESS

LANGAGE



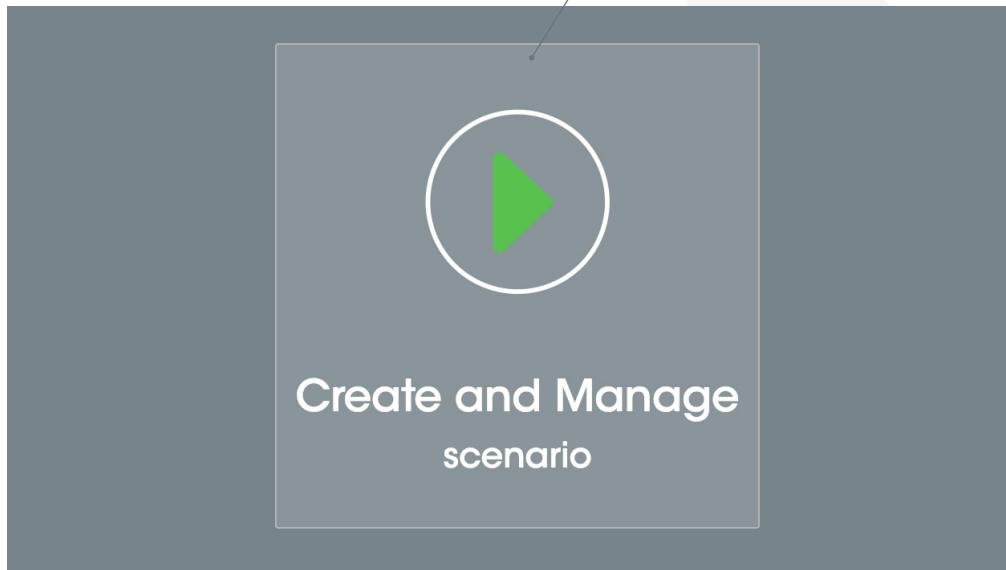
## 2. LOGIN

A screenshot of the weezago.com login page. The page features the 'weezago' logo at the top. Below the logo, there are two input fields: 'Login : starterguide@weezago.com' and 'Password : .....'. A checkbox labeled 'Remember me' is checked. At the bottom of the form is a red 'LOGIN' button.

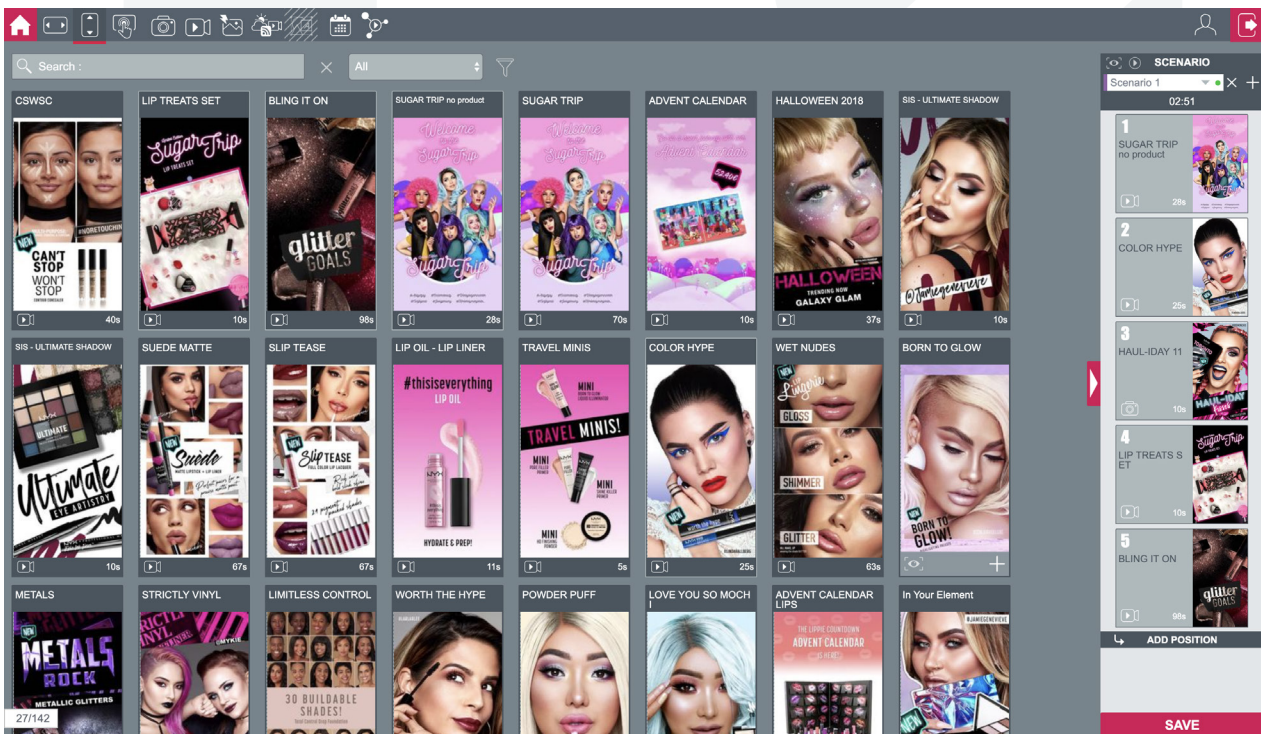
weezago

### 3. CREATE AND MANAGE!

USER INTERFACE ACCESS



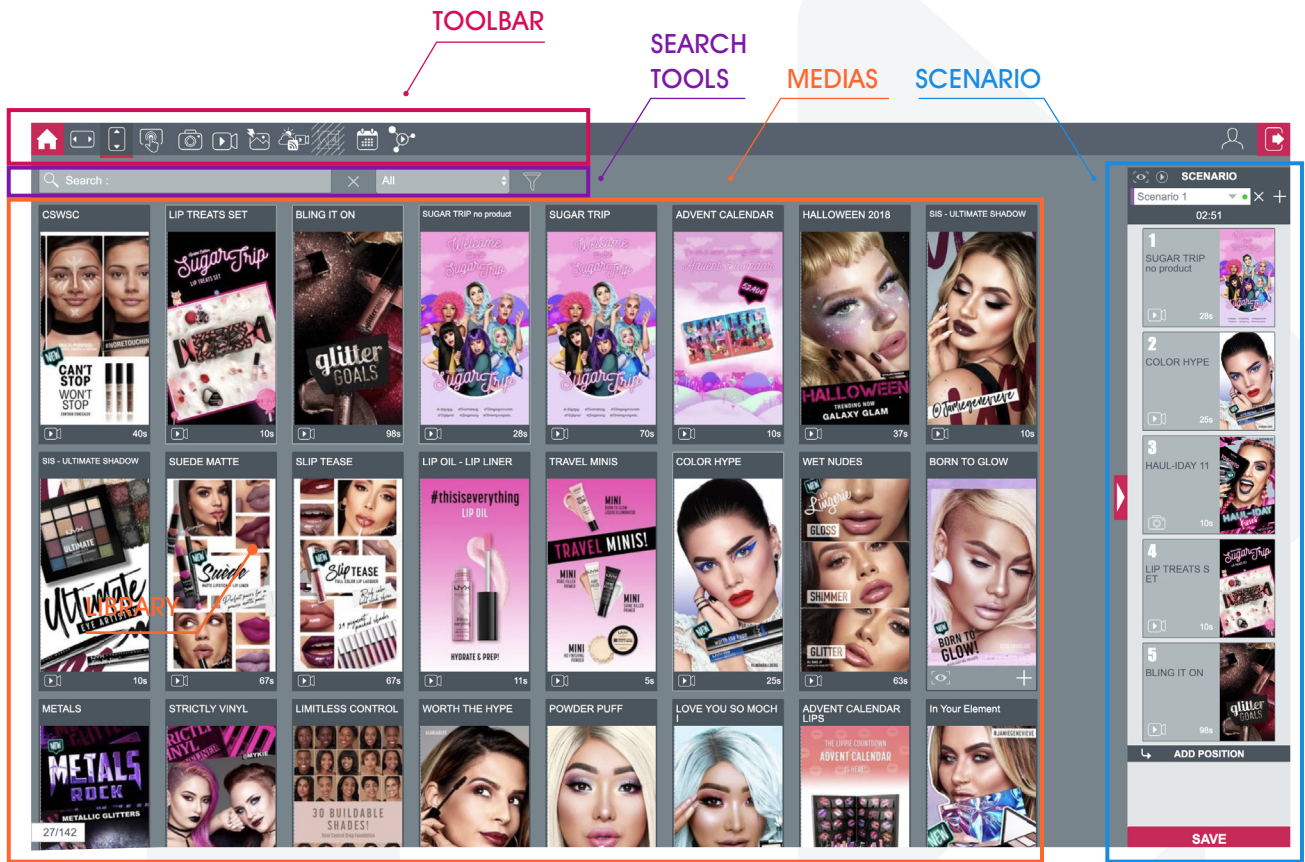
### 4. USER INTERFACE



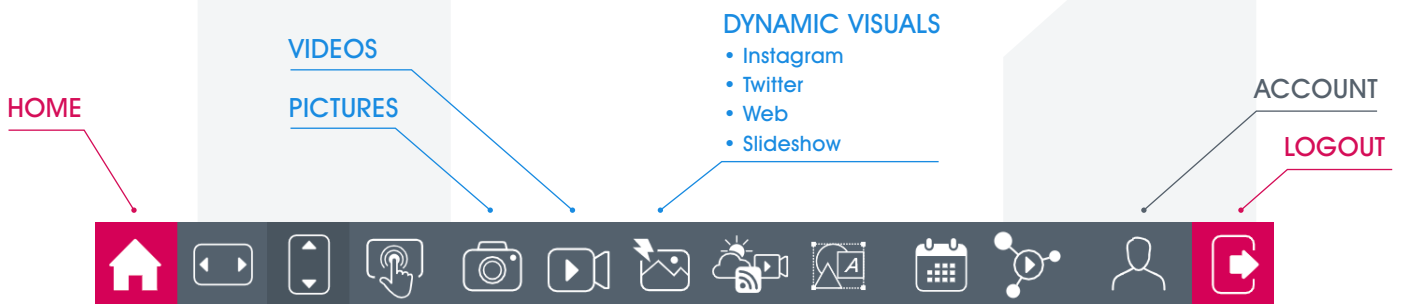


# VISUAL AND SCENARIO

## 1. INTERFACE USE

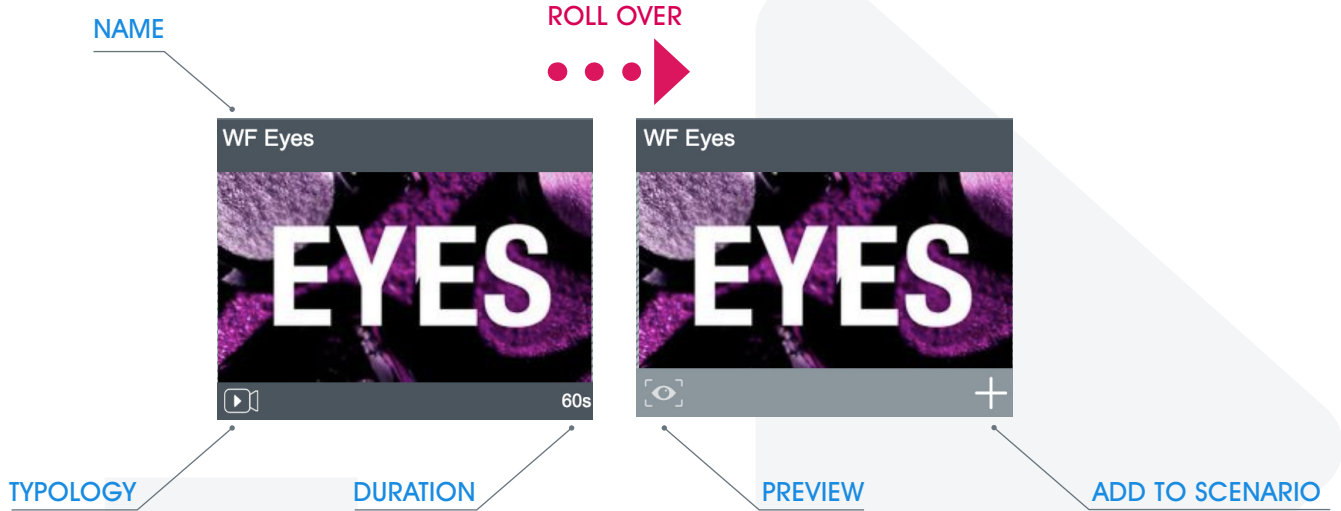


## 2. TOOLBAR

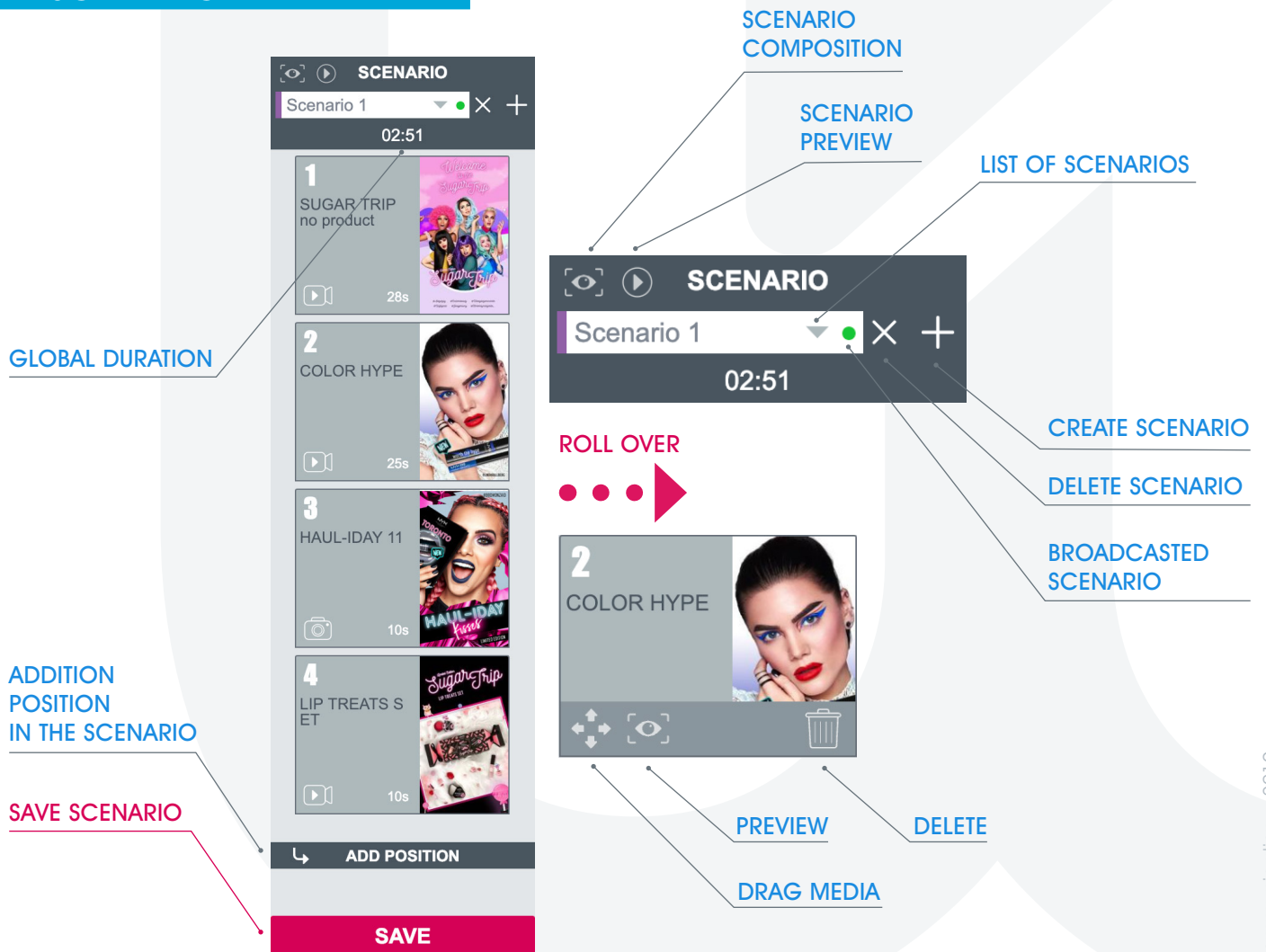


# CREATE AND MANAGE

## 1. VISUAL



## 2. SCENARIO



# BROADCAST

## 1. SCHEDULING / WEEK

- To broadcast several scenarios each day, on a complete week.

The screenshot displays a weekly broadcast scheduling interface. At the top, there is a navigation bar with a calendar icon and a red arrow pointing down. Below this, a toolbar contains various icons, including a calendar icon. The main area is a grid with columns for days of the week (Mon-Sun) and rows for time slots (9am-4pm). Scenarios are assigned to specific time slots: Scenario 2 (yellow) on Mon 9am-10am, Scenario 4 (purple) on Tue 9am-11am, Scenario 3 (red) on Fri 9am-11am, and Scenario 2 (yellow) on Fri 2pm-3pm. A 'SCENARIOS' panel on the right lists Scenario 1 (red), Scenario 2 (yellow), Scenario 3 (red), and Scenario 4 (purple). A 'DRAG and DROP' callout points to the scenario list. A 'SAVE SCHEDULING' callout points to a 'SAVE' button at the bottom right of the interface.

Drag & Drop the scenario used between each time slot

SCENARIOS

DRAG and DROP

Scenario used between or for each time slot

SAVE

SAVE SCHEDULING



# BROADCAST

## 2. SCHEDULING / YEAR

- To broadcast different scenarios each different day, on a complete year.



Drag & Drop the scenario used between each time slot

SCENARIOS

Week Year Default scenario use between each time scheduled broadcast time Scenario 1

	Mon	Tue	Wed	Thu	Fri	Sat	Sun
1							
2		Scenario 2					
3	Scenario 3						
4	Scenario 4						
5	Scenario 4						
6	Scenario 2						

Scenario used between or for each time slot

SAVE

SAVE SCHEDULING



# BROADCAST

## 3. DEVICES



SELECT ALL PLAYERS

SHOPS LIST

SCREENS LIST

SCENARIOS

The screenshot displays the Weezago Broadcast interface. At the top, there is a search bar and two dropdown menus both set to 'All'. Below this is a grid of 15 screens, labeled SCREEN 01 through SCREEN 15. Each screen contains a scenario name and a play button icon. A red arrow points to a 'DRAG and DROP' callout box over the play button on SCREEN 10. To the right of the grid is a sidebar with three sections: 'Scenario' (listing Scenario 1, 2, and 3), 'Annual calendar' (listing Calendar1), and 'Calendar Week' (listing Calendar2). At the bottom right of the interface is a red 'SUBMIT' button. The interface also includes a top navigation bar with various icons and a bottom status bar showing '15/15'.

SCREENS

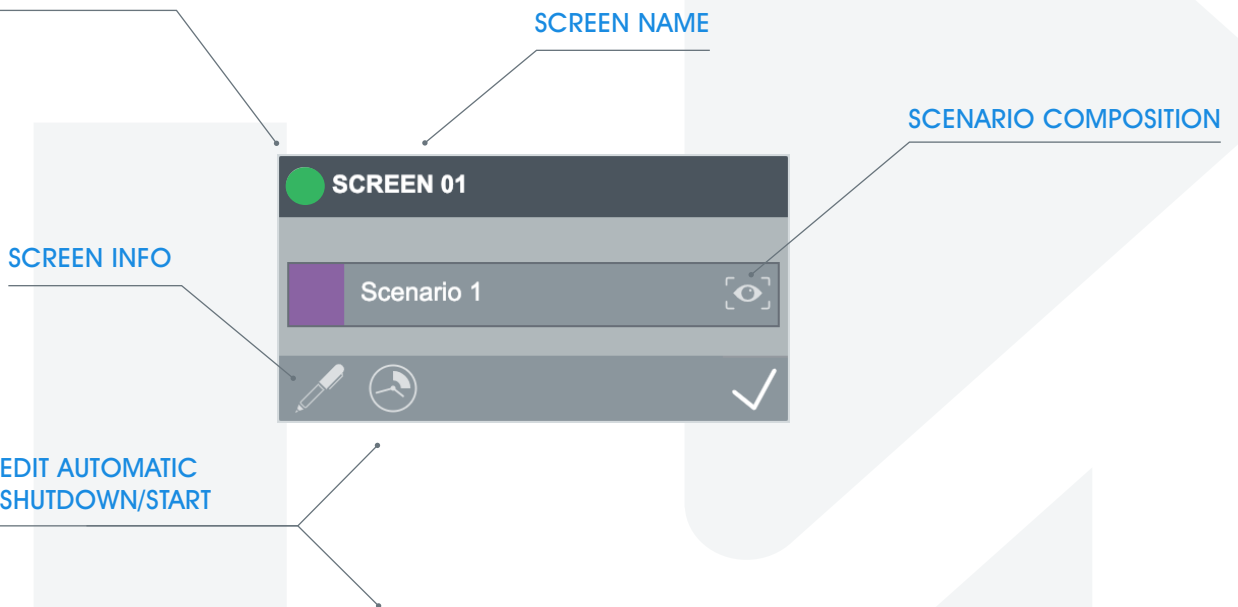
CALENDARS

BROADCAST

# BROADCAST

## 4. DEVICE INFORMATIONS

- Screen ON
- Screen HALT
- Screen disconnected ! ERROR !
- Screen uploading
- Screen not connected



### Start/Shutdown Configuration : SCREEN 01

<input checked="" type="radio"/> On	hours	Mon	Tue	Wed	Thu	Fri	Sat	Sun
	09 h 30 m	<input checked="" type="checkbox"/>	<input checked="" type="checkbox"/>	<input checked="" type="checkbox"/>	<input checked="" type="checkbox"/>	<input checked="" type="checkbox"/>	<input checked="" type="checkbox"/>	<input type="checkbox"/>
<input type="radio"/> Off	20 h 00 m	<input checked="" type="checkbox"/>	<input checked="" type="checkbox"/>	<input checked="" type="checkbox"/>	<input checked="" type="checkbox"/>	<input checked="" type="checkbox"/>	<input checked="" type="checkbox"/>	<input type="checkbox"/>

# HOW TO ?

## LOGIN

1. [www.weezago.com](http://www.weezago.com)
2. Choose language
3. Login
4. Click **Create and Manage**

## CREATE A SCENARIO

1. Choose a screen orientation (toolbar)
2. Choose a scenario (list) or create a new one
3. Add visual(s) (+)
4. Save

## CREATE A CALENDAR

1. Click on the **Calendar** button (toolbar)
2. Choose WEEK or YEAR calendar
3. Drag & Drop the scenario used between each time slot
4. Drag & Drop the scenarios used for each time slot
5. Save

## BROADCAST A SCENARIO

1. Click on the **Device** button (Toolbar)
2. Drag & Drop the scenario on the screen(s)
3. Save

## BROADCAST A CALENDAR

1. Click on the **Device** button (Toolbar)
2. Drag & Drop the calendar on the screen(s)
3. Save



# BROADCASTED FILES SPECS

## VIDEOS

**Supported file type:** .mp4, .mov, .avi, .mpeg

### Landscape format:

**Resolution :** 1080p  
**Dimensions :** 1920x1080 pixels (16:9)  
**Pixels :** Square  
**Frame / second :** 25 fps

### Portrait format:

**Resolution :** 1080p  
**Dimensions :** 1080x1920 pixels (9:16)  
**Pixels :** Square  
**Frame / second :** 25 fps

### Encoding:

**Minimum :** Content bitrate 6Mbits/s  
**Maximum :** Content bitrate 12Mbits/s

### Recommandations :

Videos in .mp4 format encoded in h264 with a constant encoding rate (CBR) of 12Mbits/s.



## PICTURES

**Supported file type:** .jpg, .png, .pdf

### Landscape format:

**Resolution :** 72dpi  
**Dimensions :** 1920x1080 pixels (16:9)  
**Colors :** RGB

### Portrait format:

**Resolution :** 72dpi  
**Dimensions :** 1080x1920 pixels (9:16)  
**Colors :** RGB

